



PROJECT WORK

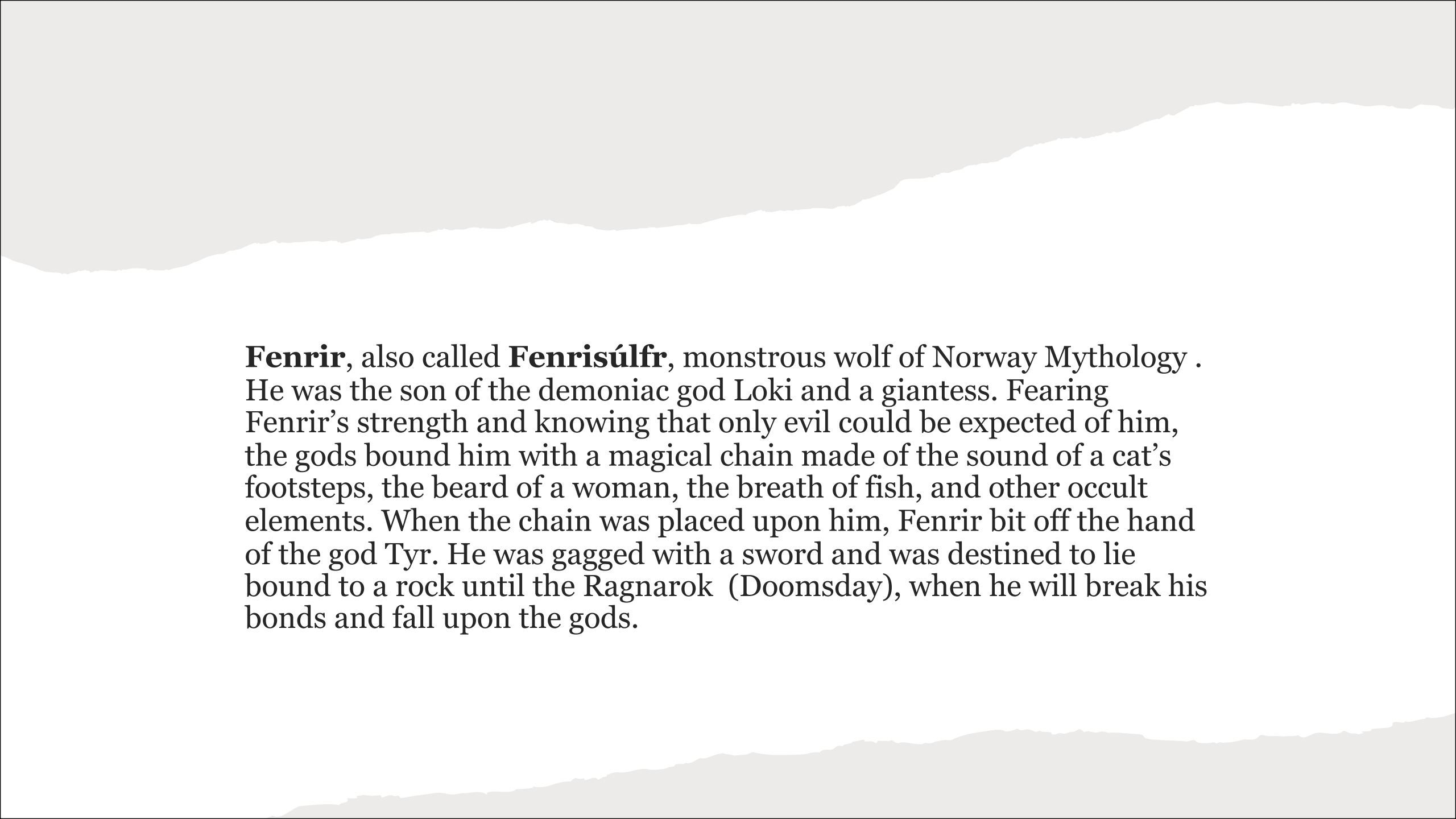
SUBMITTED BY: RUTUJA RANDIVE

3 RD YEAR FD

INSPIRATION

The inspiration for this collection is a mythological creature named Fenrir . Fenrir or Fenrisúlfr, also referred to as Hróðvitnir and Vánagandr is a wolf in Norse mythology. Fenrir, together with Hel and the World Serpent, is a child of Loki and giantess Angrboða.

Fenrir has been depicted as an evil creature who is dangerous to humanity. However in reality he was just strong and he was converted into an evil creature out of people's fear. So I wanted to honour him through this collection.



Fenrir, also called **Fenrisúlfr**, monstrous wolf of Norway Mythology . He was the son of the demoniac god Loki and a giantess. Fearing Fenrir's strength and knowing that only evil could be expected of him, the gods bound him with a magical chain made of the sound of a cat's footsteps, the beard of a woman, the breath of fish, and other occult elements. When the chain was placed upon him, Fenrir bit off the hand of the god Tyr. He was gagged with a sword and was destined to lie bound to a rock until the Ragnarok (Doomsday), when he will break his bonds and fall upon the gods.

INTERESTING FACTS ABOUT FENRIR

- Fenrir means ' he who dwells in marshes ' in old Norse language.
- Despite being tied with the thin chain he was destined to break free and kill the god Odin during the events of Ragnarok but will in turn be killed by Odin' s son Vidarr.
- The unbreakable chain which was used to tie up Fenrir was made by dwarfs using ingredients such as sound of a cat's step , the beard of a woman, the roots of a mountain, bear's sensibility, fish's breath and bird's spittle.
- Fenrir had a sword in his mouth because of which he couldn't close his mouth and his saliva created the river Ván meaning hope in Nordic language . Hope as in he will break free to revenge and kill Odin.
- Only Fenrir was allowed in Valhalla among his siblings.

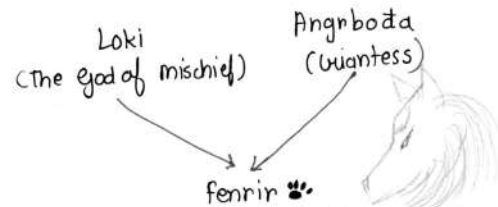
Design journal

FENRIR RESEARCH

- He is a nordic mythological creature.
- He is referred as Hróðvitnir and Vanagandr (wolf) in the mythology.
- Is a child of Loki and giantess Angrboda.
- He was bound with magical chain
- The magical chain was made of :- cat's footsteps, the beard of a woman, the breath of fish, etc.
- was destined to lie bound to a rock until Ragnarok (Doomsday), when he will break his bonds and fall upon gods.
- Fenrir → Big Black Wolf

(Bound by fear into shackles)

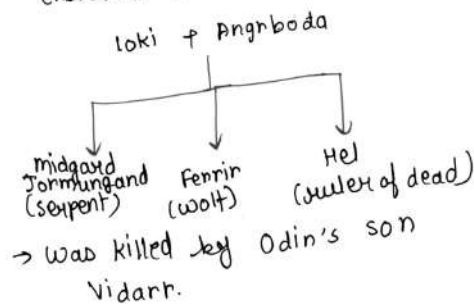
→ Stayed in valhalla



→ The deception turns into anger & darkness

→ Bites off hand of Tyr.

CHILDREN OF LOKI & ANGRBODA



→ was killed by Odin's son Vidarr.

Iconic elements of Fenrir -

- Big & Bold → Very strong
- Angry → Big teeth
- Tied down by silk chain.



THE MOOD PORTRAYED - "DARK"
Name of the mood - misunderstood darkness.

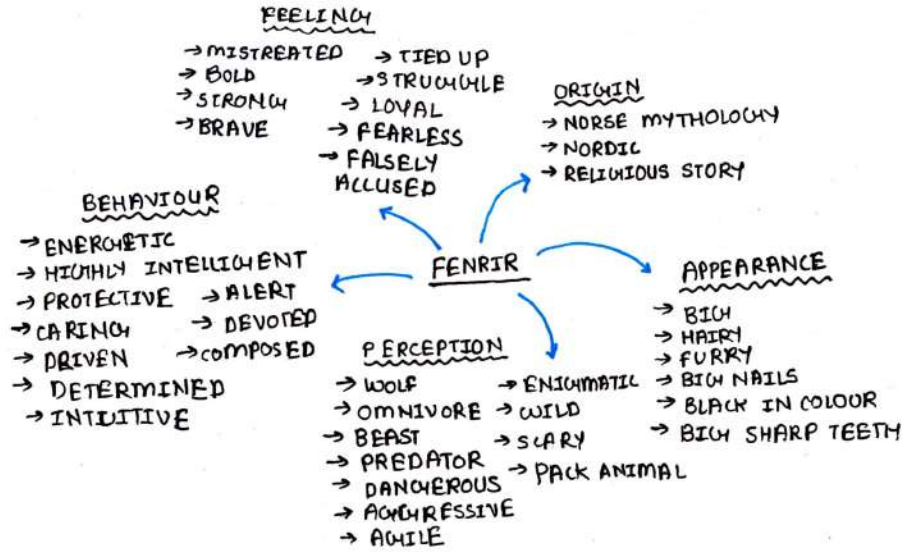
TRENDS TO CONSIDER -

- Fur → To match Fenrir's appearance
- Leather (depicting his skin)
- Organza (To portray the delicate chain)
- Dark colours (to depict the darkness & used to depict the anger)
- Strong Bold silhouettes to depict his strength.



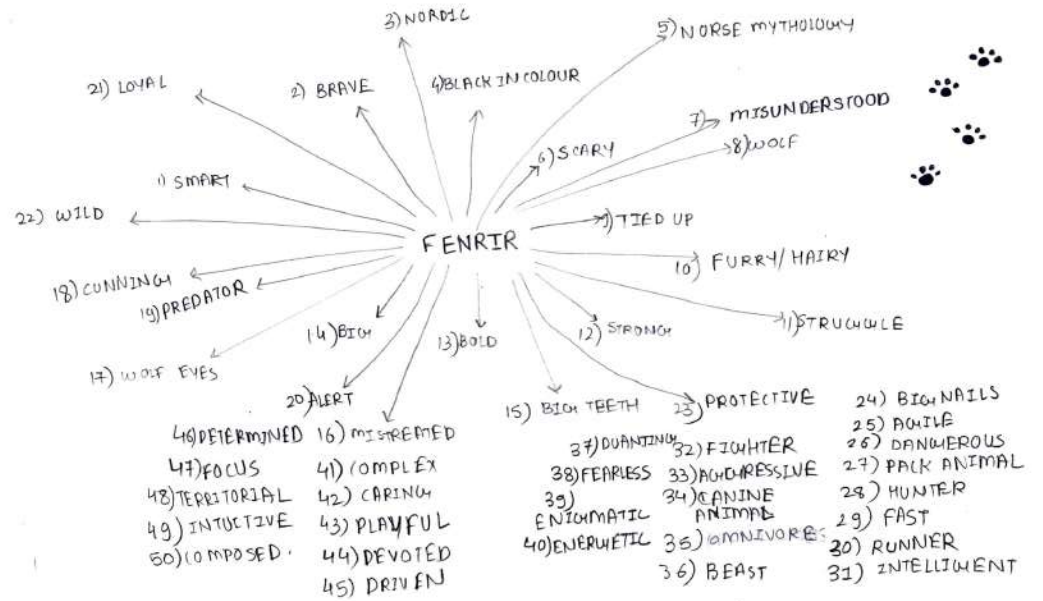
ELEMENTS -

- Chains → harness
- fur → Leather
- Chunky boots
- (All this showcase his darkness and how he was tied down).
- SILHOUTTES →
 - Should be bold but tightly fitted (boxy with a touch of femininity)
 - 1960s inspired formal wear but with a twist of chains & harnesses.
- Fabrics →
 - Leather
 - Scuba
 - Fur
 - Organza / mesh
- Colours →
 - Red & Black (shades of both)
- Styling → Short dark hair.



INSPIRATION - FENRIR (BIG NORDIC WOLF)

* MIND / WORD MAP

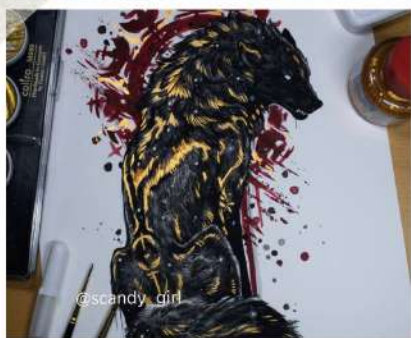


INSPIRATION BOARD



Enigmatic

Chained



hurt



Origin

Norse Mythology
Nordic
Mythological creature

Feeling

Mistreated
Bold
Strong
Brave
Tied up



Struggle
Loyal
Fearless
Falsely
Accused

Fenrir

Appearance

Big
Furry
Canine

Big nails
Black



Behaviour

Energetic
Highly intelligent
Protective
Caring
Driven
Determined

Intuitive
Alert
Devoted
Composed

Perception

Wolf
Carnivore
Beast
Predator
Dangerous

Aggressive
Enigmatic
Wild
Scary
Pack animal
Agile





Misunderstood.
Darkness
Moodboard





fleece

shiny leather

organza

TREND BOARD



faux Fur

1960s
inspired
formal
wear

ELEMENTS BOARD



Harnesses



Chunky boots



Chains



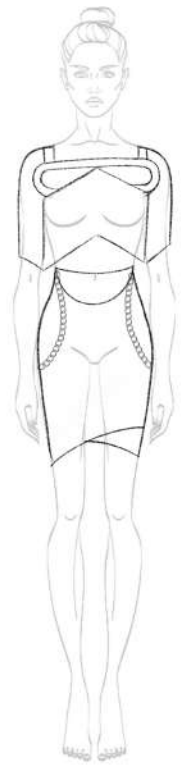
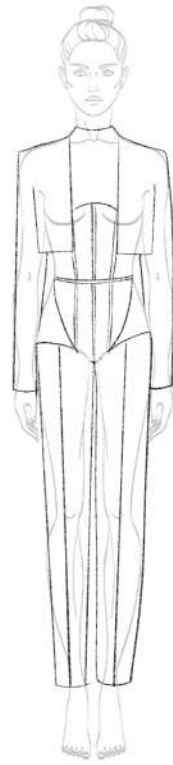
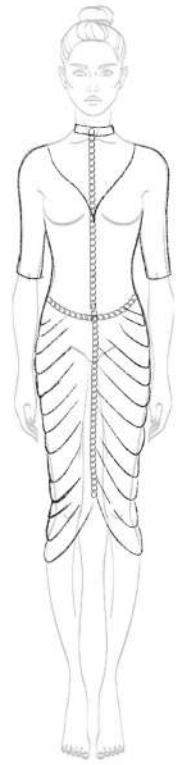
Leather



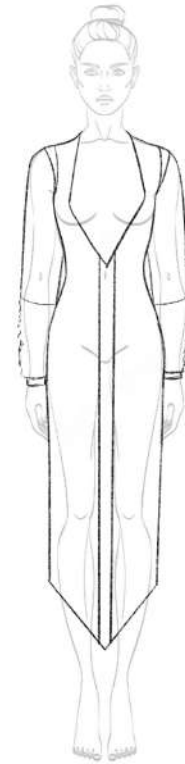
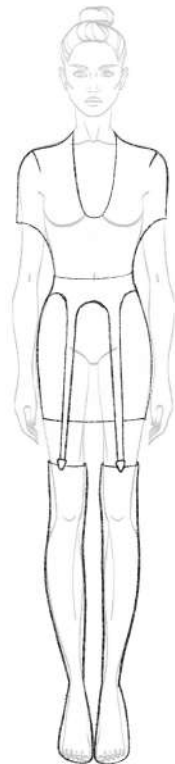
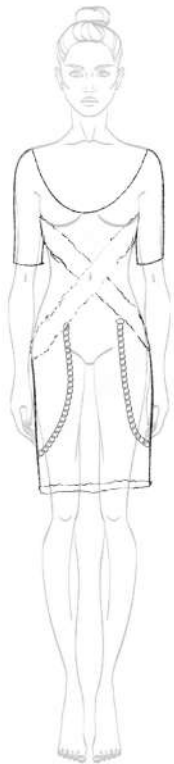
Fur



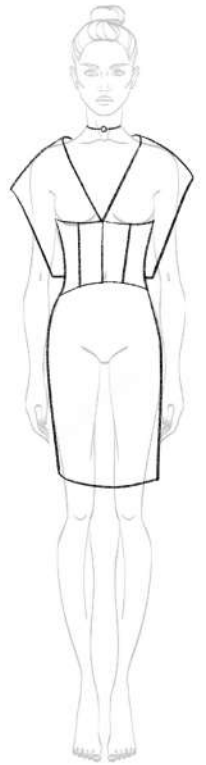
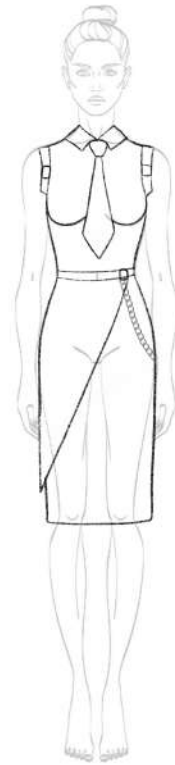
Rough sketches



Rough sketches



Rough sketches



Final illustrations



Final illustrations



Group composition





Thank you !